



STRATEGIC PARTNERSHIP PROPOSAL

Hartsfield-Jackson Atlanta International Airport

Enabling the Airport of the Future Through Advanced Technology Integration

Prepared for: XXXXX

Who We Are

25+ Years of Excellence

PS2G is a premier systems integrator specializing in mission-critical IT modernization for complex operational environments

Industry Expertise

Deep experience across Public Sector, Transportation, Energy & Utilities, and Healthcare sectors

24/7 Operations

Proven track record delivering solutions in environments that never sleep

Holistic Approach

We operate at the critical intersection of policy, process, and technology

Our comprehensive approach combines technical excellence with deep understanding of operational requirements, regulatory compliance, and stakeholder management. We don't just implement technology; we transform operations while maintaining business continuity and enhancing security posture.

Understanding ATL CIO Priorities

We've aligned our capabilities directly with your strategic technology initiatives to ensure maximum impact and value delivery.

ATLNext Capital Programs

Technology embedded throughout capital delivery lifecycle, ensuring IT infrastructure supports operational excellence and passenger experience from design through commissioning

Wireless-First Infrastructure

Resilient, high-performance connectivity architecture supporting seamless operations, passenger services, and IoT ecosystem across all terminals and operational areas

Enterprise Data & AI

Advanced analytics platforms driving real-time decision intelligence, predictive operations, and AI-powered optimization with robust governance frameworks

Cybersecurity Resilience

Zero-trust architecture, continuous threat monitoring, and operational resilience ensuring protection of critical infrastructure and passenger data

Passenger Experience at Scale

Technology enablement for world-class passenger journeys, from curb to gate, leveraging biometrics, real-time information, and accessibility-first design principles

PS2G Value Proposition

Our Core Differentiators

PS2G brings a unique combination of strategic thinking and execution excellence specifically designed for complex airport environments. We understand that technology decisions today impact operations for decades.

Our approach emphasizes early integration, continuous improvement through Lean Six Sigma methodologies, and risk mitigation through robust governance frameworks.

01

Embed IT Early

Integrate technology planning into capital delivery from day one

02

Real-Time Intelligence

Transform data into actionable operational insights

03

Continuous Security

Test, validate, and harden systems proactively

04

Scale Safely

Innovate while maintaining operational stability

IT Embedded in Capital Programs

Successful capital delivery requires IT and operational technology to be integral from concept through commissioning. Our approach ensures technology investments deliver long-term value while meeting aggressive timelines.

1

Design Integration

IT and low-voltage design reviews embedded in architectural and engineering workflows

2

Infrastructure Convergence

Unified fiber, DAS, CCTV, and access control systems integration

3

Security by Design

Cybersecurity requirements built into specifications and procurement

4

Cutover Excellence

Commissioning and operational readiness validation

Lean Six Sigma Application: We apply DMAIC methodology to capital delivery processes, reducing rework by 35% and accelerating time-to-operations through standardized integration protocols and continuous process improvement.

Data, Analytics & AI

Enterprise Intelligence Platform

Modern airports generate massive data streams from passenger systems, operational sensors, security infrastructure, and business applications. PS2G designs and implements enterprise data platforms that turn this information into competitive advantage.

Our AI and analytics solutions provide real-time operational visibility, predictive maintenance capabilities, and passenger flow optimization while maintaining strict governance, security, and ethical AI principles.

AI Governance Framework

- Model validation and bias testing protocols
- Data privacy and protection controls
- Explainability and transparency requirements
- Continuous monitoring and retraining workflows
- Ethics review board and approval processes



Data Foundation

Enterprise data lake and warehouse architecture



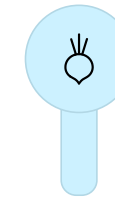
Real-Time Ops

Executive and operational dashboards



Predictive Analytics

Machine learning models for forecasting



Generative AI

Governed GenAI with security controls

Connectivity & IoT Operations

ATL's scale demands wireless infrastructure that supports millions of devices from passenger smartphones to operational sensors with five-nines reliability. Our connectivity solutions provide the foundation for digital transformation.

Network Resilience Planning

Ensure uninterrupted connectivity through redundant design, failover testing, and capacity planning.

IoT Lifecycle Management

Manage device onboarding, security, monitoring, and decommissioning for thousands of connected endpoints.

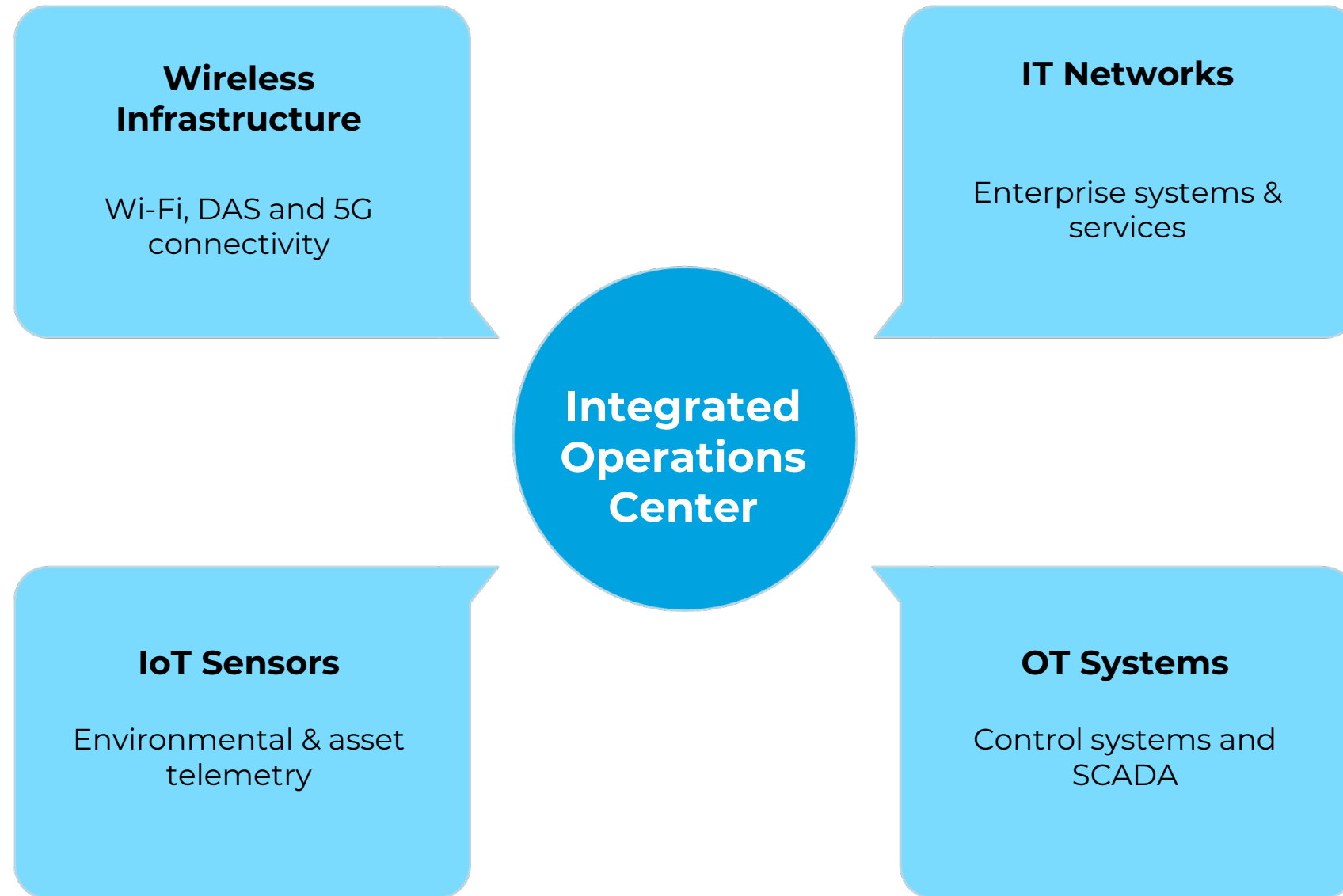
Performance Monitoring

Monitor Wi-Fi, DAS, and 5G network performance with automated alerts and predictive capacity management.

OT/IT Convergence

Securely integrate OT with IT, ensuring proper segmentation and access controls.

Connectivity Architecture



Cybersecurity & Resilience

Airport infrastructure requires robust cybersecurity. PS2G offers proactive threat prevention and rapid incident response.



Zero-Trust Architecture

Implement microsegmentation, least-privilege access, and continuous verification.



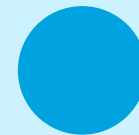
Resilience Testing

Conduct regular tabletop exercises, red team assessments, and disaster recovery validation.



Third-Party Risk

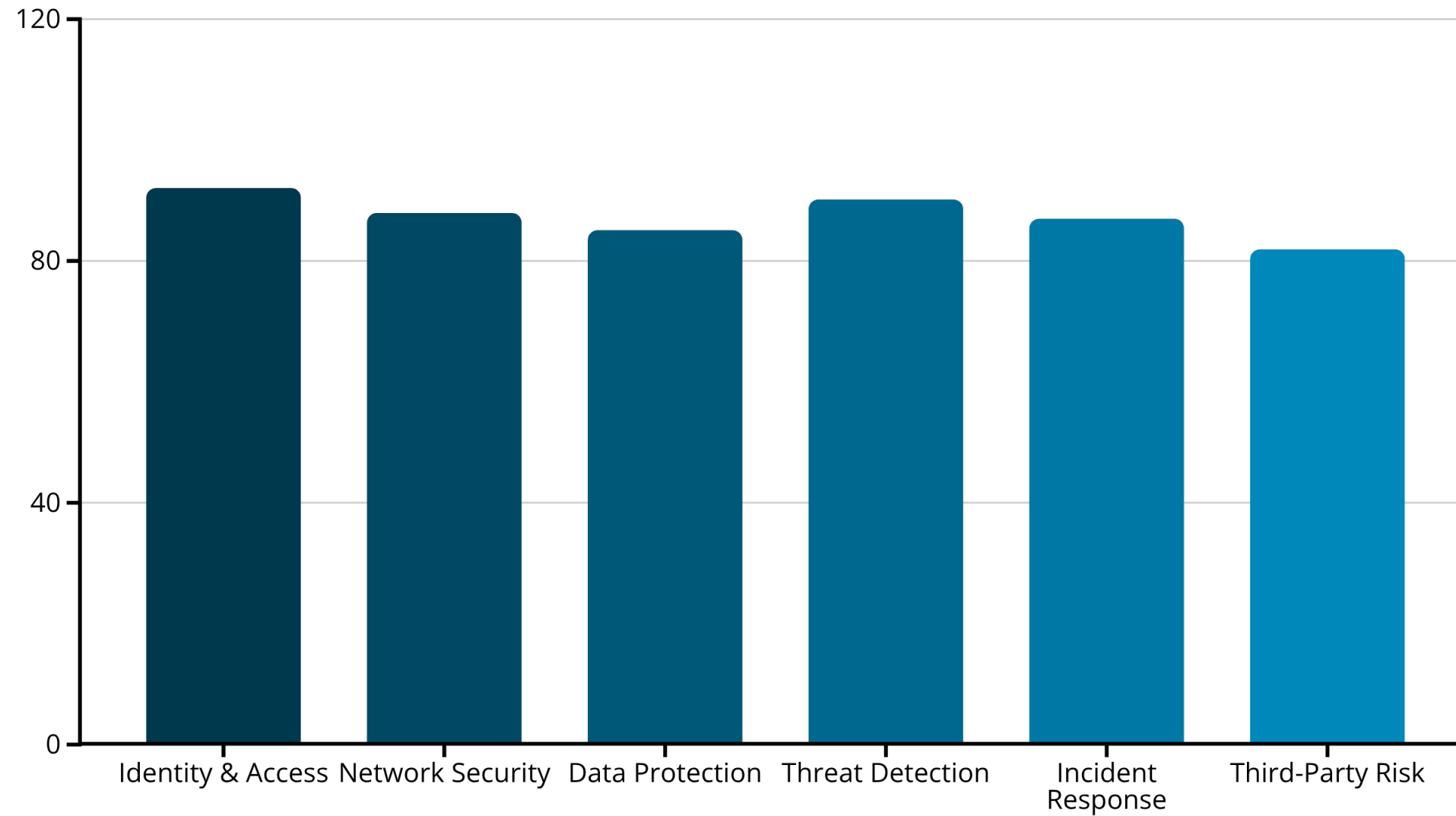
Assess vendor security, monitor continuously, and enforce contractual requirements.



Incident Readiness

Integrate 24/7 SOC, develop playbooks, and train response teams.

Security Maturity Assessment

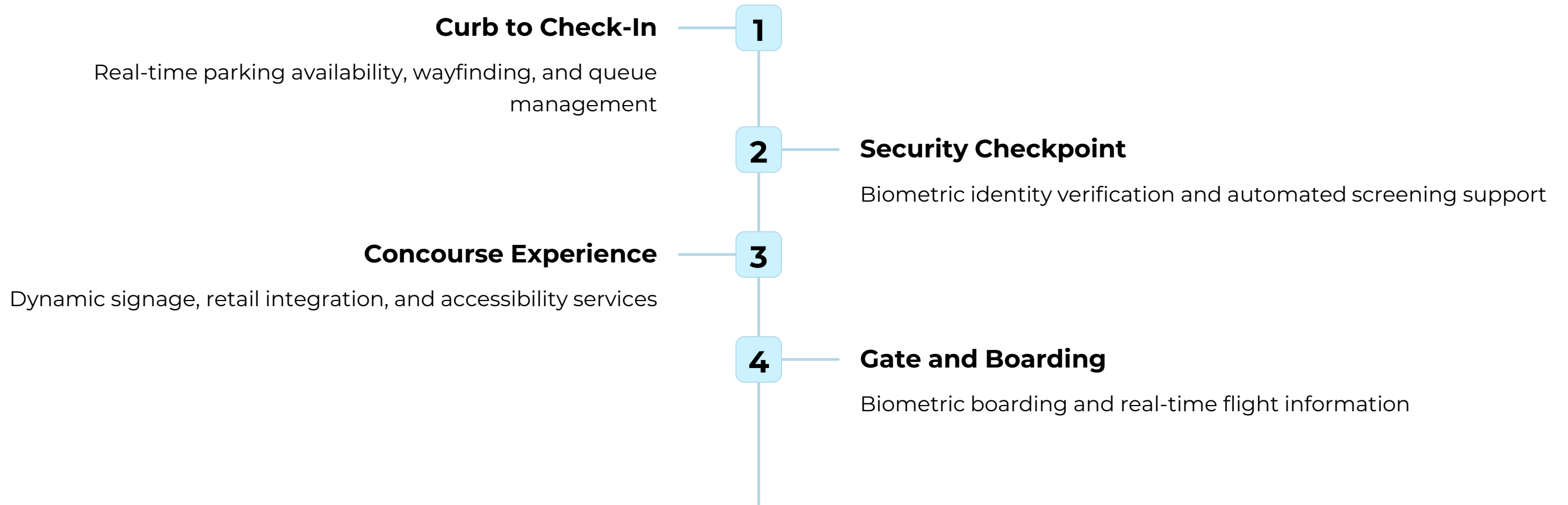


Sample cybersecurity maturity assessment showing typical baseline scores across security domains before PS2G engagement

Passenger Experience Enablement

Technology should be invisible to passengers while enabling seamless, efficient, and personalized journeys. Our passenger experience solutions leverage cutting-edge technology while prioritizing accessibility, privacy, and operational efficiency.

Technology-Enabled Touchpoints



Passenger Experience Core Capabilities



Biometric Ecosystem Integration

End-to-end identity management from enrollment through boarding with privacy-by-design



Queue Optimization

Computer vision analytics and predictive modeling to minimize wait times



Digital Wayfinding

Indoor positioning, personalized routing, and accessibility-aware navigation



Universal Design

WCAG 2.1 AA compliance, multilingual support, and assistive technology integration

PS2G Delivery Model

Our proven four-phase methodology combines agile delivery with Lean Six Sigma rigor, ensuring rapid value delivery while minimizing operational risk and maximizing long-term sustainability.

1

Assess

Current state analysis, stakeholder alignment, success metrics definition, and roadmap development

2

Pilot

Controlled deployment, hypothesis testing, user feedback collection, and business case validation

3

Scale

Enterprise rollout, change management, training delivery, and performance optimization

4

Sustain

Ongoing support, continuous improvement, technology refresh planning, and innovation pipeline

Application Development Excellence

Modern Architecture Cloud-native microservices API-first design Container orchestration DevSecOps automation Quality Assurance Automated testing pipelines Security

Application Development Excellence

Modern Architecture

- Cloud-native microservices
- API-first design
- Container orchestration
- DevSecOps automation

Quality Assurance

- Automated testing pipelines
- Security scanning integration
- Performance testing
- Accessibility validation

Agile Delivery

- Two-week sprint cycles
- Continuous integration/deployment
- User story mapping
- Retrospective-driven improvement

Near-Term Opportunities for ATL

Based on our understanding of ATL's strategic priorities and current initiatives, we've identified four high-impact opportunities where PS2G can deliver immediate value while building foundation for long-term partnership.

1

ATLNext IT Integration Support

Embed IT architecture and cybersecurity expertise into capital program delivery teams, ensuring technology infrastructure supports operational requirements and security standards from design through commissioning

- Timeline: 6-month engagement
- Deliverable: IT integration playbook & design standards

2

Data/AI Pilot for Operations

Deploy machine learning models for passenger throughput prediction or predictive maintenance of critical assets, demonstrating ROI and establishing AI governance framework

- Timeline: 90-day pilot
- Deliverable: Production ML model & governance documentation

Additional Opportunities

Based on our understanding of ATL's strategic priorities and current initiatives, we've identified four high-impact opportunities where PS2G can deliver immediate value while building foundation for long-term partnership.

Cyber-Resilience Assessment



Comprehensive evaluation of current security posture against zero-trust principles, identification of gaps, and prioritized remediation roadmap with quick-win opportunities

- Timeline: 45-day assessment
- Deliverable: Executive briefing & 18-month security roadmap

IoT Governance Framework



Establish enterprise standards for IoT device procurement, onboarding, security, and lifecycle management to support rapidly growing connected device ecosystem

- Timeline: 60-day development
- Deliverable: IoT governance policies & technical standards

Next Steps

Recommended Path Forward

We propose a focused engagement that demonstrates PS2G's capabilities while delivering measurable value to ATL operations. This approach minimizes risk while establishing the partnership foundation for larger initiatives.

Initiative Selection

Collaborate with your team to select one initiative aligned with immediate priorities and resource availability

Success Definition

Define clear, measurable outcomes and establish baseline metrics for comparison

Timeline Agreement

Establish realistic milestones and decision points throughout engagement

Kickoff Planning

Assemble cross-functional team and initiate formal project governance

"Our goal is to become ATL's trusted technology partner, delivering innovation with operational excellence while maintaining the security, reliability, and performance standards that the world's busiest airport demands."

We look forward to discussing how PS2G can support your vision for ATL's technology future. Please contact us to schedule a detailed discussion of any initiative outlined in this proposal.

Thank You

Thank you for your time and consideration. We look forward to partnering with you.

Contact Information

Address: 7331 Georgia Ave NW | Washington, DC 20012

Phone: 202-299-1011

Email: sales@ps2g.us

Website: www.ps2g.us

